



**METALLOPRODUKTSIA**

**Installation manual**

**Model: MITSUBISHI Pajero Sport II  
Pajero Sport/Triton**

**Skid plate for: transmission case and transfer box**

**Article: 14.1145 V1/14.1146**

**Body type: KH0**

**Years: 2008 -/2006 -**

**Engine type: 2.5TD; 3.0; 3.2TD; 3.5/ 2,5TD**

Engine bay and transmission elements skid plate has been designed and manufactured by LLC Metalloproduktzia. Product conforms to TOR 4591-001-25888788-2006 requirements. Product design is protected by model copyright certificates №89059, 15980, 15981, 15982, 15983. Patented in Russian Federation.

### APPLICATION:

Protection of engine bay and transmission elements from mechanical deformation.  
Protection of engine bay and transmission elements from dust and damp.

### INSTALLATION:

Engine bay and transmission elements skid plate has been designed particularly for a certain vehicle. It should be mounted according to the producer's installation instruction by a dedicated dealer or on certified service stations. The skid plate is fixed to regular apertures located on vehicle's body load-bearing elements. In case of correct installation the skid plate should not interfere with any vehicle's units and components.

### INSTALLATION MANUAL:

1. The skid plate is to be installed after mounting of the skid plate for engine bay.
2. Install brackets "2" and "3", fixing them under transmission's beam fastening OE bolts.
3. Mount combined bracket "1" on the subframe's right side. Don't screw the bolts.
4. Unscrew transfer box fastening beam's nut, then mount bracket "5" on the thread pin of support.
5. Bracket "4" is applied for vehicles without transfer box support. The bracket is to be fixed to the subframe's OE points, after what bracket "5" is to be fixed to it.
6. Fix the skid plate's front part with the skid plate for engine bay to the mounted elements "12".
7. Tighten all screw joints.

### OPERATING CONDITIONS:

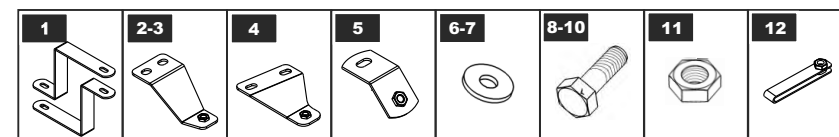
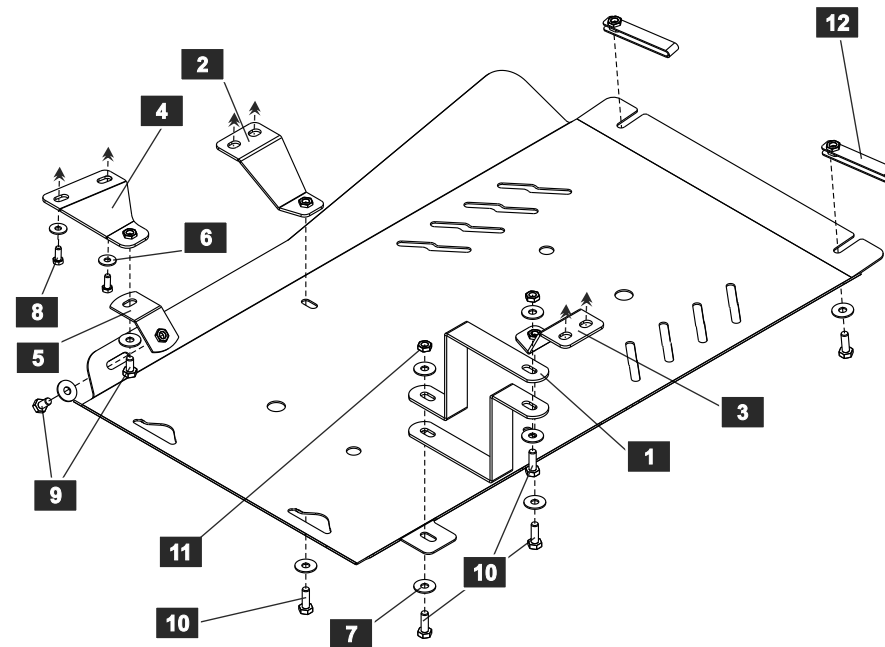
Engine bay and transmission elements skid plate has been designed to operate in conditions specified by vehicle's producer. Cases of crush or driving into obstacles at a speed should be excluded during exploitation. In case of head-on crush it is necessary to assure in absence of damages of vehicle's components and units and availability of roadworthiness on certified service stations.

### WARRANTY:

Warranty period - 24 months.

### WARRANTY TERMS:

The skid plate should be installed on a vehicle with undamaged body and load-bearing elements (vehicle, which had never been involved in road traffic accident);  
There are no mechanical damages of the skid plate resulting from head-on crush. All requirements to skid plate installation should be satisfied;  
There are no mechanical damages of powder coating.  
Producer does not bear liability for damages caused to the vehicle, health and life of people in case of installation and exploitation terms violation. Producer has a right to introduce changes into the skid plate construction.



### LIST OF PARTS

NO.	NAME	QTY.	NO.	NAME	QTY.
1	Corbel	2	7	Washer 10	10
2	Left corbel	1	8	Bolt M8x20	2
3	Right corbel	1	9	Bolt M10x20	2
4	Corbel	1	10	Bolt M10x30	6
5	Towing lug	1	11	Nut M10	2
6	Washer 8	2	12	Threaded insert	2

Thread	M6x1.0	M8x1.25	M10x1.5	M12x1.75
Tightening torque	9.8 Nm	24.0 Nm	47.0 Nm	81.0 Nm