

Engine bay and transmission elements skid plate has been designed and manufactured by LLC Metalloproduksia. Product conforms to TOR 4591-001-25888788-2006 requirements. Product design is protected by model copyright certificates №89059, 15980, 15981, 15982, 15983. Patented in Russian Federation.

### APPLICATION:

Protection of engine bay and transmission elements from mechanical deformation.  
Protection of engine bay and transmission elements from dust and damp.

### INSTALLATION:

Engine bay and transmission elements skid plate has been designed particularly for a certain vehicle. It should be mounted according to the producer's installation instruction by a dedicated dealer or on certified service stations. The skid plate is fixed to regular apertures located on vehicle's body load-bearing elements. In case of correct installation the skid plate should not interfere with any vehicle's units and components.

### INSTALLATION MANUAL:

1. Disassemble the skid plate into its component parts. Remove the standard dust-coat from the car.
2. Unscrew the upper bolt from the fixation of the left longeron and fasten the skid plate's corbel "2" into this position with M 8x40 bolts.
3. Unscrew the lower bolt from the fixation of the right longeron and fasten the skid plate's corbel "1" into this position with M 8x40 bolts.
4. Fasten the front part of the skid plate to the already mounted corbels with M 10x30 bolts.
5. Fix the threaded inserts to the apertures on the car frame.
6. Fasten the rear part of the skid plate to the already mounted straps with M 10x30 bolts at points "A".
7. Remove the fixation straps from the standard dust-coat and fix them in the points "B" on the skid plate.
8. In addition, fasten the side dust-coats to the skid plate with standard self-screwing fasteners.
9. Fasten all screw joints.

### OPERATING CONDITIONS:

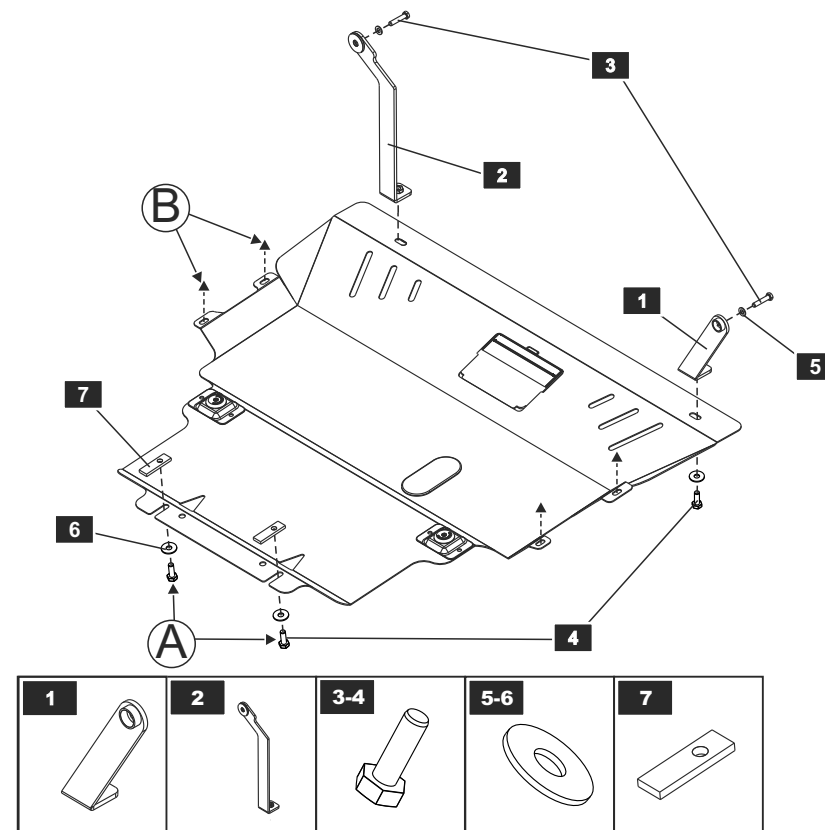
Engine bay and transmission elements skid plate has been designed to operate in conditions specified by vehicle's producer. Cases of crush or driving into obstacles at a speed should be excluded during exploitation. In case of head-on crush it is necessary to assure in absence of damages of vehicle's components and units and availability of roadworthiness on certified service stations.

### WARRANTY:

Warranty period - 24 months.

### WARRANTY TERMS:

The skid plate should be installed on a vehicle with undamaged body and load-bearing elements (vehicle, which has never been involved in road traffic accident);  
There are no mechanical damages of the skid plate resulting from head-on crush. All requirements to skid plate installation should be satisfied;  
There are no mechanical damages of powder coating.  
Producer does not bear liability for damages caused to the vehicle, health and life of people in case of installation and exploitation terms violation. Producer has a right to introduce changes into the skid plate construction.



### LIST OF PARTS

NO.	NAME	QTY.
1	Corbel right	1
2	Corbel left	1
3	Bolt M8x40	2
4	Bolt M10x30	4
5	Washer 8	2
6	Washer 10	4
7	Threaded insert	2

Thread	M6x1.0	M8x1.25	M10x1.5	M12x1.75
Tightening torque	9.8 Nm	24.0 Nm	47.0 Nm	81.0 Nm